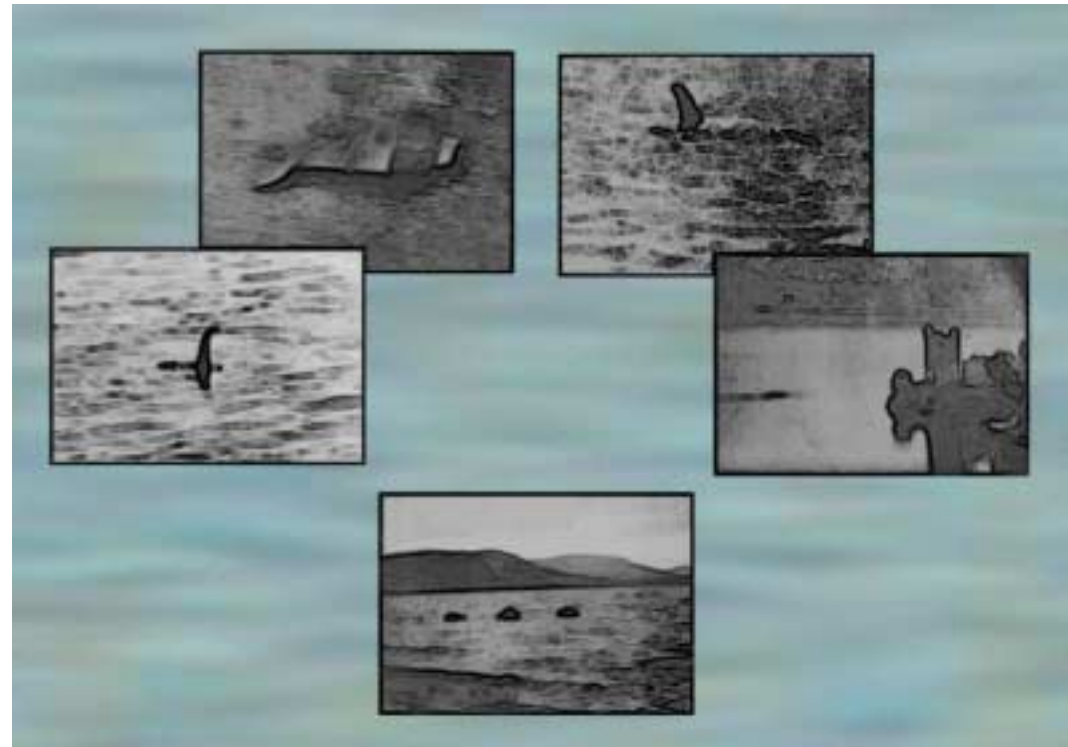


Section 8

SHAPE-SHIFTERS

Here are some sketches of the “classic” photographs taken of the Loch Ness Monster since 1933. There are also some films but they show much less detail!

- Try to draw one animal based on the information shown in all the pictures.
- Look at your drawing and other people’s drawings. Do they tell you more about the kind of animal it might be or more about the photographs?
- So are the pictures real or fake?
- If all the pictures are real and if the animal you have drawn needs to be able to change its shape, then what purpose do you think the shape changing might have?



CLICK TO SEE
NEXT SECTION